

# FERTILEADER DURING TUBER DEVELOPMENT



POTATO

## OBJECTIVE

To compare the yield and size distribution impact in chipper potato variety *Snowden* for multiple foliar applications of Fertileader Gold during tuber development against grower standard practice.

**SITE LOCATION:**  
Hancock, WI

**RESEARCHER:**  
University of Wisconsin  
Hancock Research Station

## STUDY INFORMATION

Variety	Snowden
Population	20,000
Planting Date	14-May-2021
Harvest Date	29-Sept-2021

## KEY FINDINGS

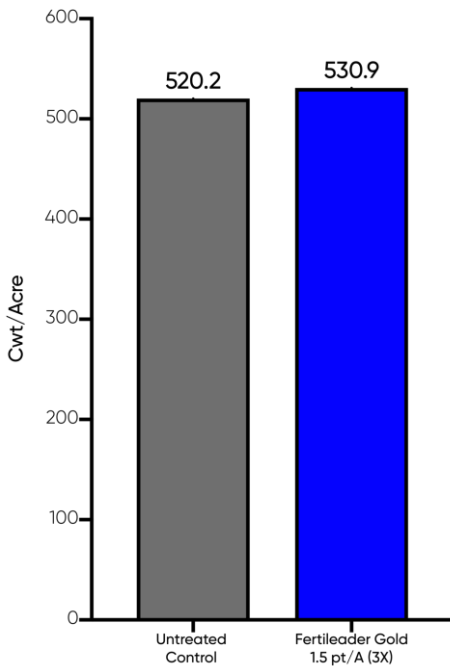
**+10.7 cwt/ac**

In marketable yield with  
Fertileader Program

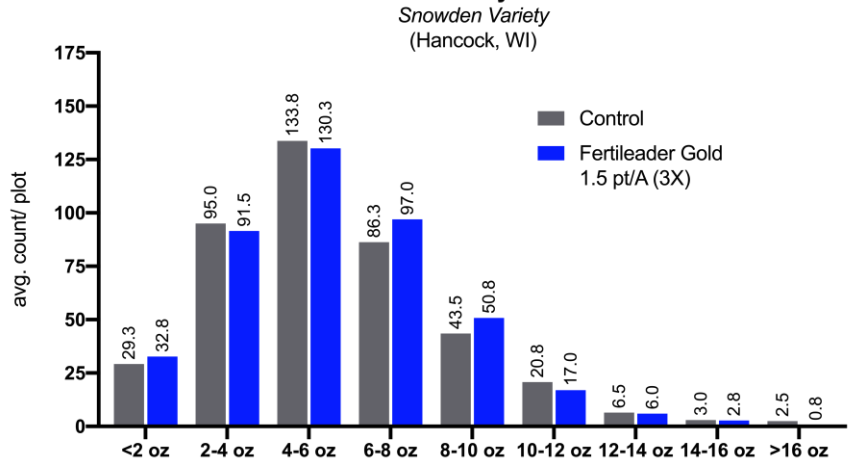
**ROI:**

**\$79.86/ac**

Total Marketable Potato Yield  
Snowden Variety  
(Hancock, WI)



Size Distribution by Tuber Count  
Snowden Variety  
(Hancock, WI)



**Graphs:** Foliar applied treatment of Fertileader Gold during tuber development increased yield 10.7 cwt/ac on Snowden variety potato. Revenue was calculated at \$10/cwt. Fertileader Gold was calculated at retail cost of \$48.25/gallon.

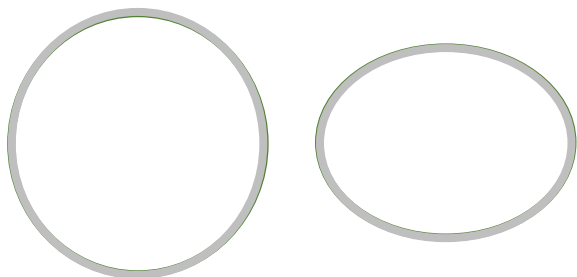
## APPLICATION

Treatment	Application Rate
Grower Standard Practice	N/A
Fertileader Gold	3X @ 1.5 pt/acre, 14-day intervals

## VOLUME & AREA DATA

Length x Width

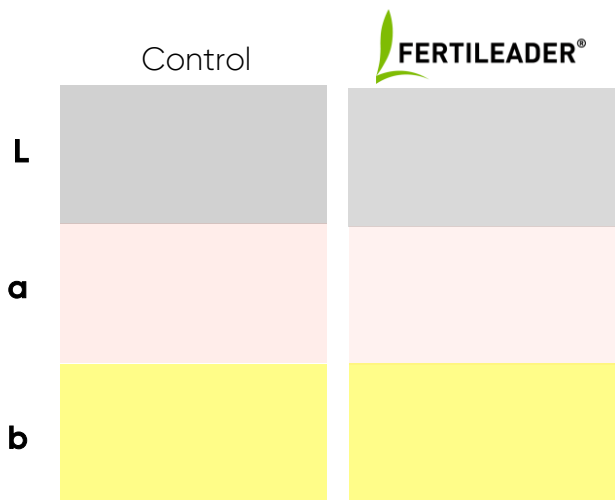
Height x Width



	Width	Length	Height	Shape	S. Area
Control	2.62	2.74	1.99	27146.89	9256.7
Fertileader	2.64	2.72	1.98	27227.86	9206.05



## HUNTER LAB COLOR DATA FROM PHOTO-SPECTROMETRY



	Specific Gravity	L	a	b
Control	1.070	62.160	4.080	23.43
Fertileader	1.075	65.020	3.193	23.22

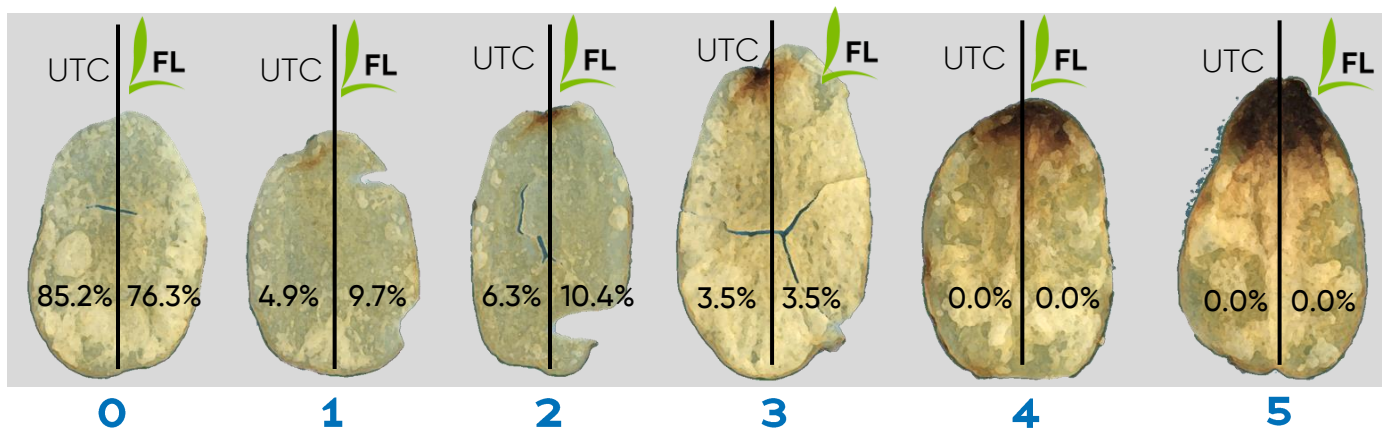
L\* Lightness Value Improved by

**4.6%**

(a) red/green value reduced by

**21.7%**

## STEM END SCORING SCALE



	%0	%1	%2	%3	%4	%5
Control	85.2	4.9	6.3	3.5	0.0	0.0
Fertileader	76.3	9.7	10.4	3.5	0.0	0.0