

# FERTILEADER DURING TUBER DEVELOPMENT



POTATO

## OBJECTIVE

To compare the yield and size distribution impact in chipper potato variety *Atlantic* for multiple foliar applications of Fertileader Gold during tuber development against grower standard practice.

## SITE LOCATION:

Antigo, WI

## RESEARCHER:

University of Wisconsin  
Extension Research Farm

## STUDY INFORMATION

Variety	Atlantic
Population	20,000
Planting Date	18-May-2021
Harvest Date	22-Sept-2021

## KEY FINDINGS

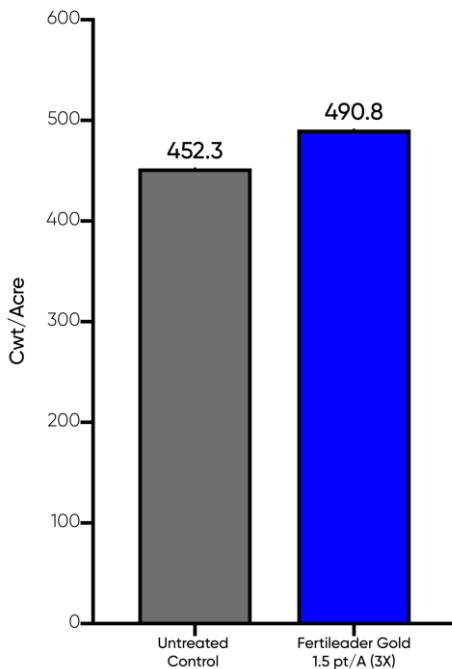
**+38.5 cwt/ac**

In marketable yield with  
Fertileader Program

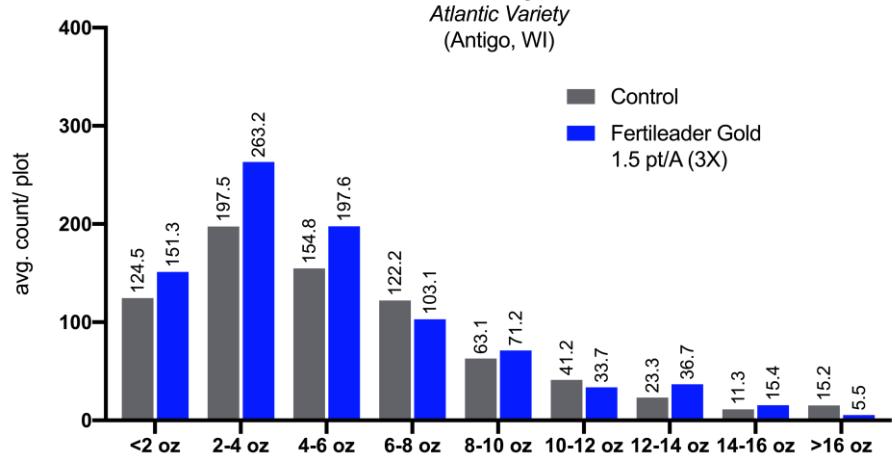
**ROI:**

**\$357.16/ac**

Total Marketable Potato Yield  
Atlantic Variety  
(Antigo, WI)



Size Distribution by Tuber Count  
Atlantic Variety  
(Antigo, WI)



**Graphs:** Foliar applied treatment of Fertileader Gold during tuber development increased yield 38.5 cwt/ac on Atlantic variety potato. Revenue was calculated at \$10/cwt. Fertileader Gold was calculated at retail cost of \$48.25/gallon.

## APPLICATION

Treatment	Application Rate
Grower Standard Practice	N/A
Fertileader Gold	3X @ 1.5 pt/acre, 14-day intervals

## VOLUME & AREA DATA

Length x Width

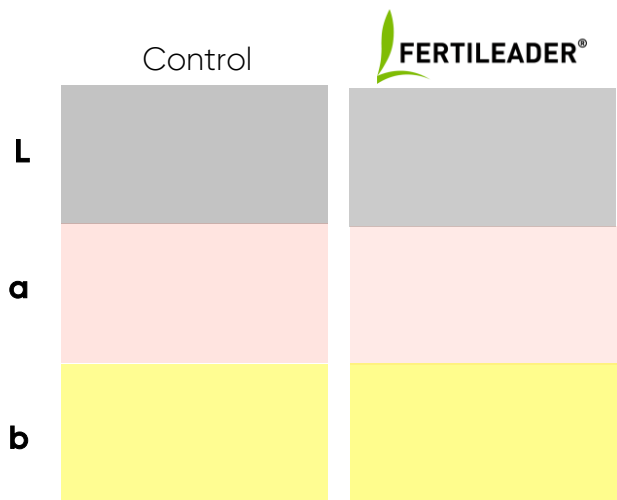
Height x Width



	Width	Length	Height	Shape	S. Area
Control	2.6706	2.807	2.089	26804.75	9724.804
Fertileader	2.6362	2.7652	2.041	27156.94	9380.16



## HUNTER LAB COLOR DATA FROM PHOTO-SPECTROMETRY



	Specific Gravity	L	a	b
Control	1.082	57.11	5.88	21.59
Fertileader	1.090	59.98	5.23	22.48

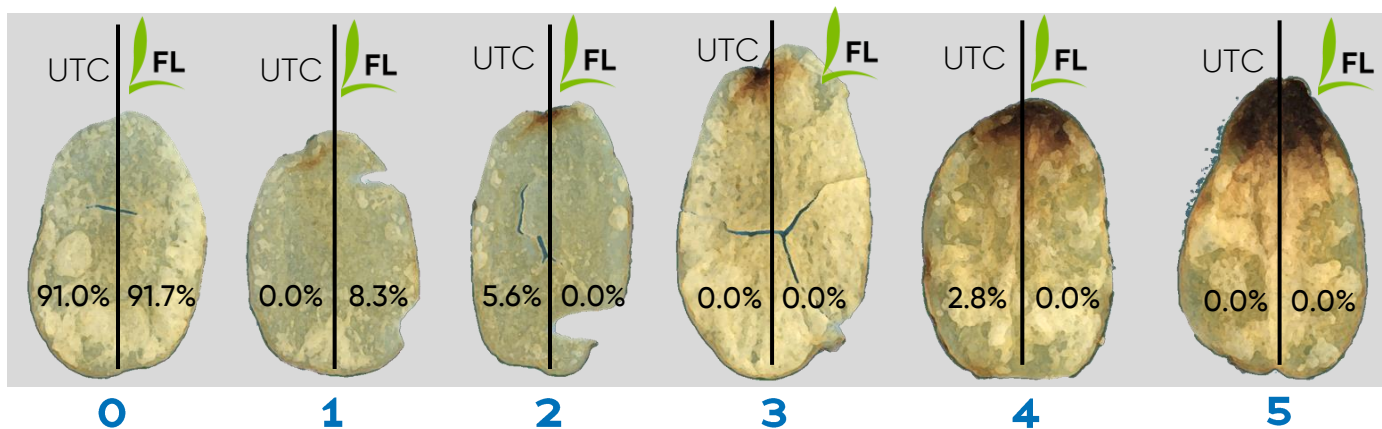
L\* Lightness Value Improved by

**5.0%**

(a) red/green value reduced by

**11%**

## STEM END SCORING SCALE



	%0	%1	%2	%3	%4	%5
Control	91.0	0.0	5.6	0.0	2.8	0.0
Fertileader	91.7	8.3	0.0	0.0	0.0	0.0